



# Modular Line

## Water Compact Pressurized



- › high-performance temperature control
- › excellent price-performance
- › dependable short delivery times
- › competent advice
- › outstanding services

### Typical applications

- › Injection moulding
- › Blow moulding
- › Extrusion
- › Thermoforming
- › Food technology
- › Laboratory & test engineering

### Typical materials

- › PA – Polyamide
- › POM – Polyoxymethylene
- › PET – Polyethylene terephthalate
- › PC – Polycarbonate
- › PBT – Polybutylene terephthalate



*“The new Modular Line of temperature control systems offers highest flexibility and availability for our customer’s requirements throughout the entire product range.”*

**Frank Spork**, Director Products & Services

### MODULAR LINE UNIT OVERVIEW – WATER COMPACT PRESSURIZED

Unit	K-150	K-160	KN-150	Unit	K-150	K-160	KN-150	Unit	K-150	K-160	KN-150
Temperature range °C	150	160	150	Max. flow rate l/m	27	30	60	Dimensions L mm	639	639	739
Max. ext. volume l	13	10	18	Max. pressure bar	4.5	5.0	6.0	Dimensions B mm	266	266	276
Heating capacity kW	9	9	12					Dimensions H mm	562	562	772
Cooling capacity kW	24	24	35					Weight kg	55	55	75

Product Family	Water Compact Pressurized	Water Compact Pressurized	Water Compact Pressurized
Code for Unit	<b>K150G</b>	<b>K160G</b>	<b>KN150H</b>

### Produktlinie „BASE“

Controller	SBC-T	SBC-T	SBC-T
Made of non corrosive materials (SS, brass. etc)	•	•	•
IP54 (cabinet and hydraulic part of unit)	•	•	•
On rollers	•	•	•
Level monitoring by mag. float switch	•	•	•
Touch screen controller	•	•	•
Heating rods made of Incolloy	•	•	•
Automatic filling by magnetic valve	•	•	•
Bypass between from/to process (pump protection)	•	•	•
Automatic temperature dependent system closing	•	•	•
Monitoring of surface temperature of heating rods	•	•	•
Dirt trap in from process line and cooling water inlet	•	•	•
Tool draining by suction and leak stop	•	•	•
CEE-plug	•	•	•
Booster pump	–	•	–
Connection for external sensor PT100	•	•	•
Preparation for sound, signal connection, 9 pole Sub-D	•	•	•
Interface TTY 20mA on 9-pin or 25-pin SUB-D	0	0	0
Interface RS232 or RS485 on 9-pin SUB-D	0	0	0

### Product Line „Process Monitoring“

Controller	SBC-T plus	SBC-T plus	SBC-T plus
Flow measurement	•	•	•
Reinforced pump	• 60 l/m 6.0 bar	• 60 l/m 6.0 bar	• 60 l/m 6.0 bar
Filling nozzle with ball valve	•	•	•
Interface TTY 20mA on 9-pin or 25-pin SUB-D	•	•	•
Interface TTY 20mA 25-pin SUB-D (instead of 9 pin Sub-D)	0	0	0
Interface RS232 oder RS485 on 9-pin SUB-D (instead of 20mA TTY)	0	0	0
Interface Profibus (9-pin SUB-D) or Profinet (RJ45) instead of 20mA TTY	0	0	0

### Product Line „Energy Efficiency“

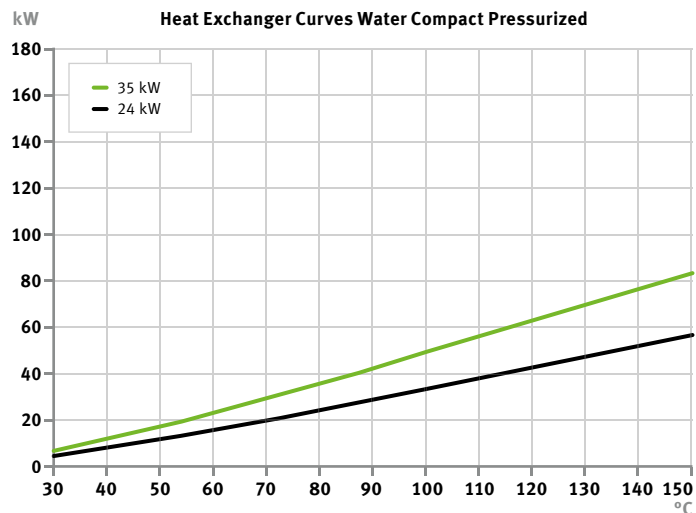
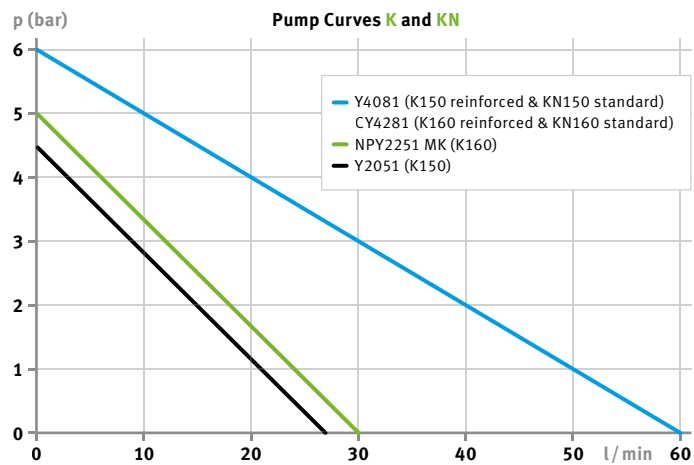
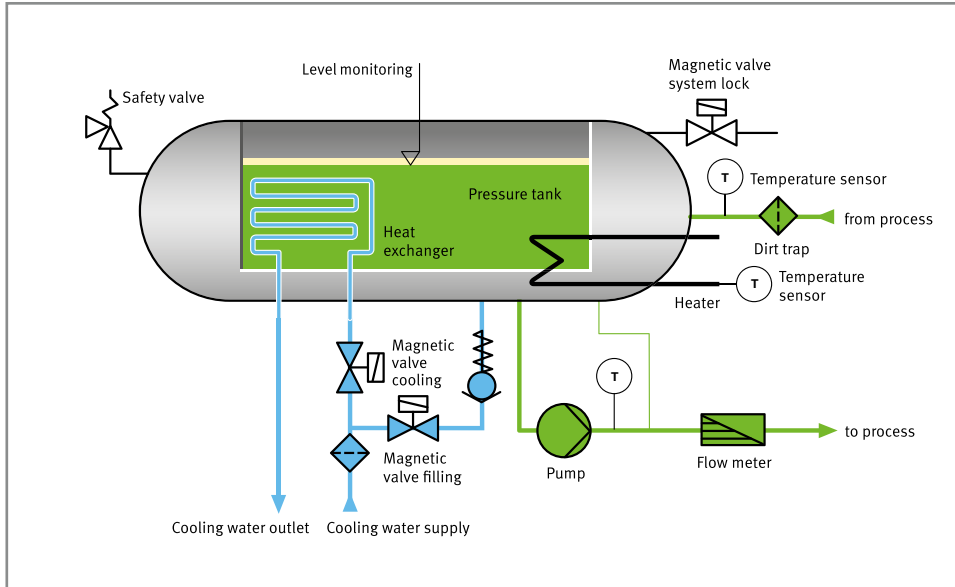
Controller	SBC-T plus	SBC-T plus	SBC-T plus
Frequency Converter	•	•	•
Pressure Measurement	•	•	•
From process sensor instead of connection for ext. sensor (only SBC-T)	•	•	•

### SINGLE Modular Line

Accessories	K150G	K160G	KN150H
Shut off valves	0	0	0
Acoustic signal (Kit with assembly manual; Hole in Front door)	0	0	0
Plug for any signals	0	0	0
Hoses	0	0	0

• Standard 0 Optional – Not available

## Modular Line Water Compact Pressurized



## SERVICES

„Medium“ Spare Part Package – contains  
(as appropriate and according to system requirement):

- › electrical and hydraulic consumable and expendable parts e.g. seals, dirt traps, mechanical seals for pumps
- › electrical and hydraulic spare parts e.g. sensors, heaters, heat exchangers, fuses, solenoid valves, float switches

„Full“ Spare Part Package – contains  
(as appropriate and according to system requirement):

- › all items included in the „Medium“ spare parts package
- › controller including adapter board
- › pump(s) as used in system



**SINGLE** Temperiertechnik GmbH

Ostring 17-19

73269 Hochdorf/Germany

Phone: +49 (0)7153/3009-0

Fax: +49 (0)7153/3009-50

[www.single-temp.de](http://www.single-temp.de)